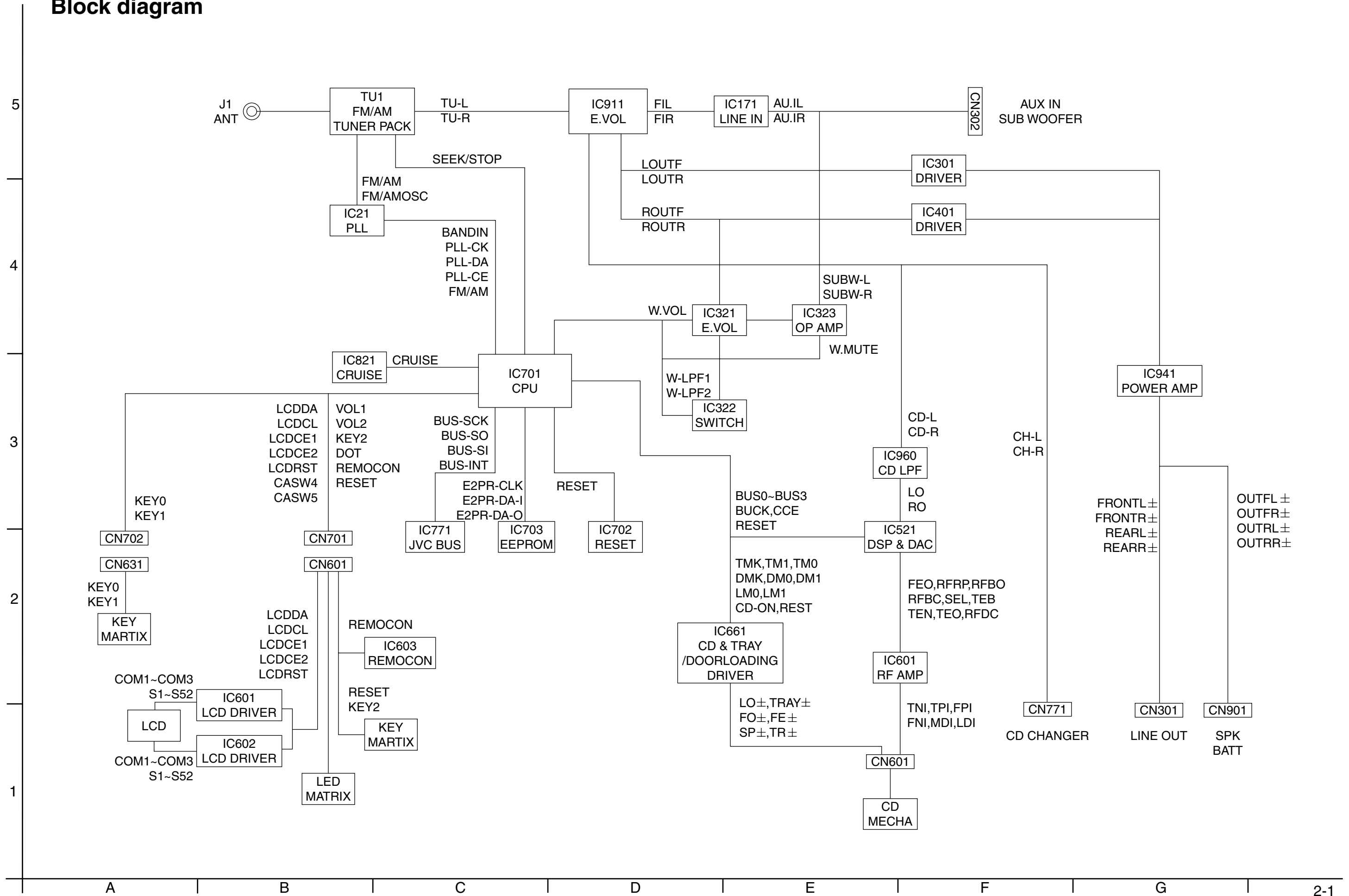


Block diagram



# Standard schematic diagrams

## Main amp section

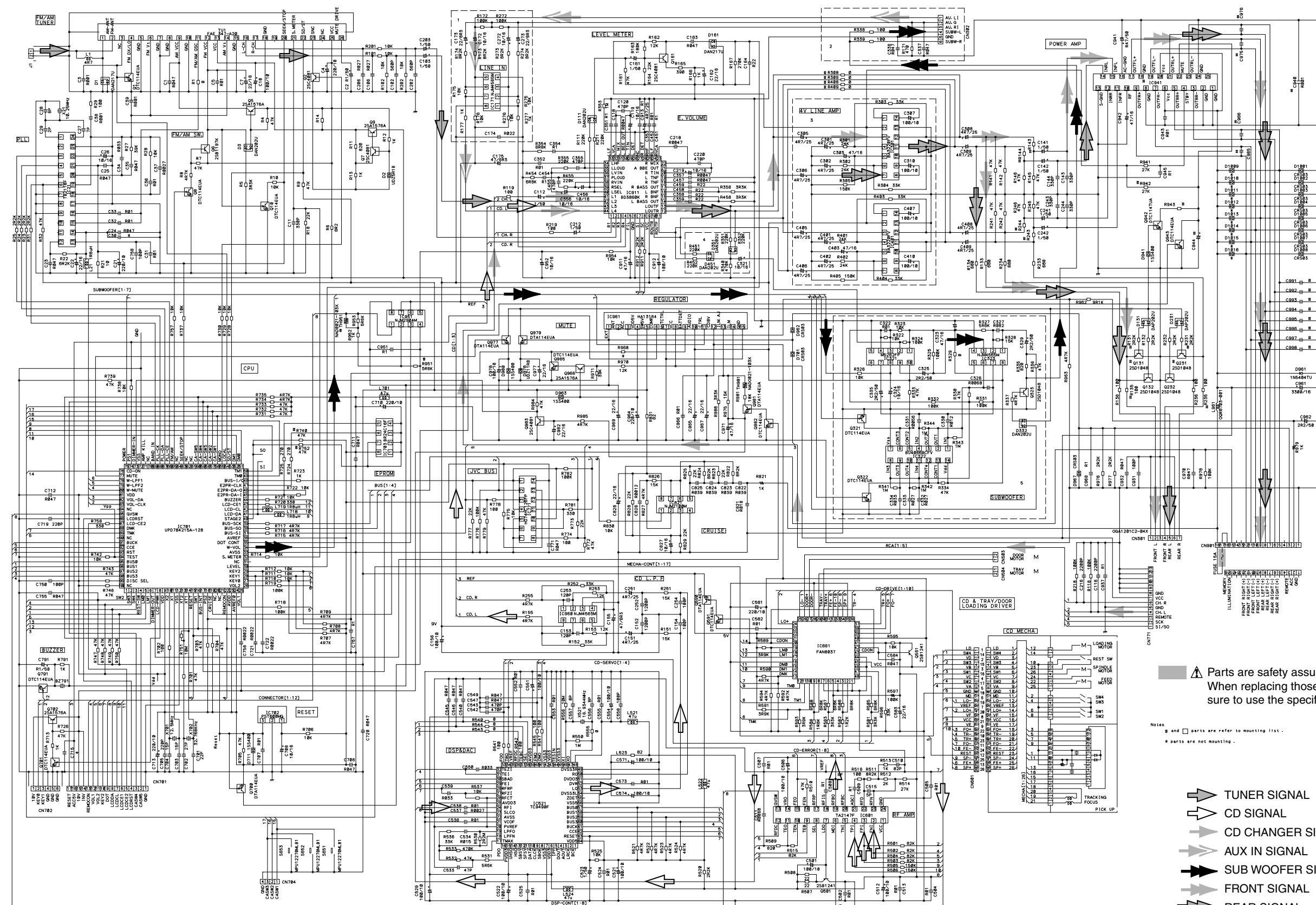
5

4

3

2

1



Parts are safety assurance parts.  
When replacing those parts make sure to use the specified one.

Notes  
# and # parts are refer to mounting list.  
# parts are not mounting.

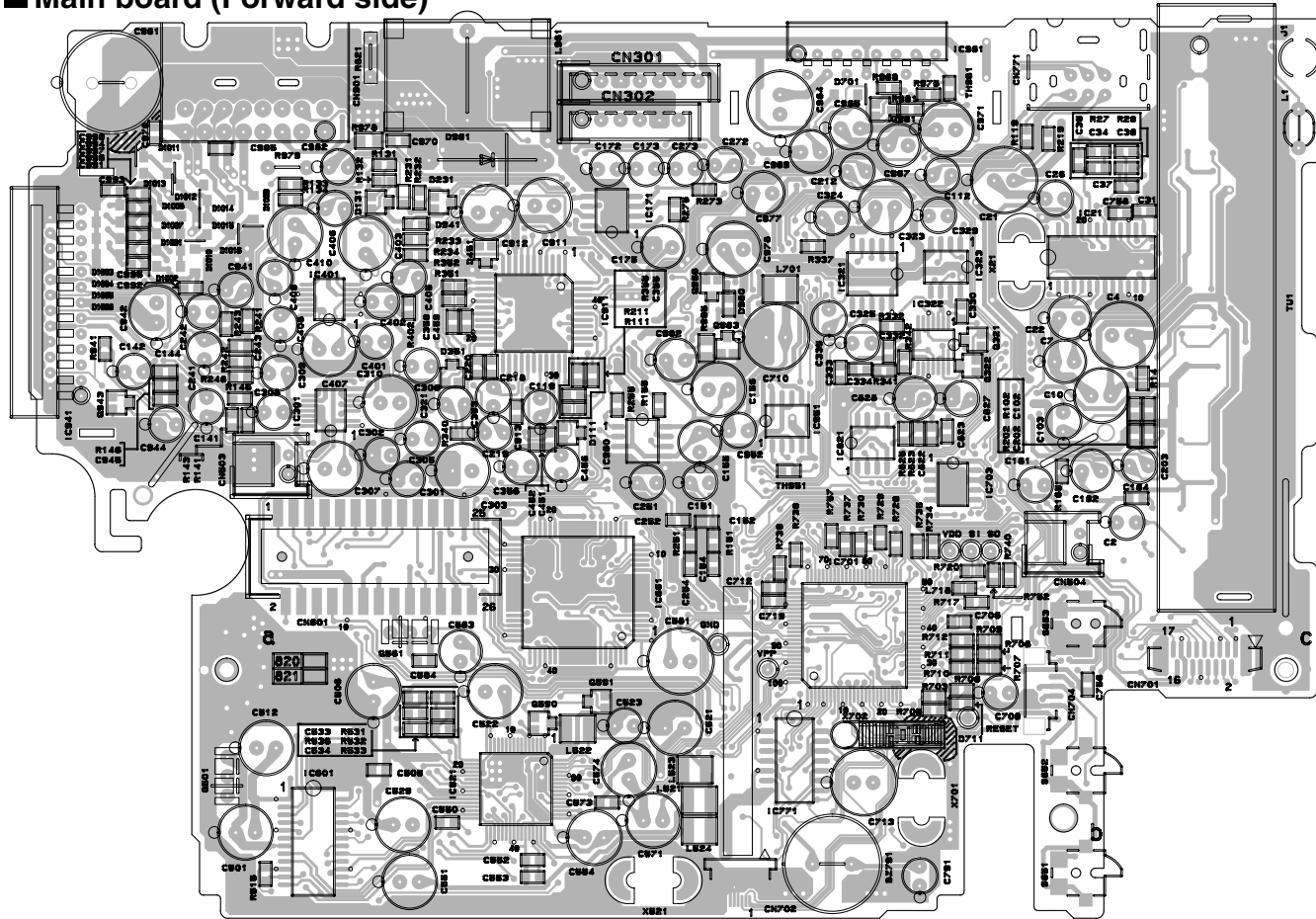
- TUNER SIGNAL
- CD SIGNAL
- CD CHANGER SIGNAL
- AUX IN SIGNAL
- SUB WOOFER SIGNAL
- FRONT SIGNAL
- REAR SIGNAL

Mounting list																																																			
TRK MODEL NAME	JVC MODEL NAME	1	2	3	4	5	Q151	Q251	R151	R251	R951	TR951	R380	R480	R380	R480	R145	R144	R245	R244	R748	R752	C975	C976	C980	C985	IC941	IC942	C991	C992	C993	C994	C995	C996	C997	C998	R945	C944	C948												
CDR-828U-JV	KD-LX160	X	X	X	X	X			X	X	X	X	X	X	X																																				
CDR-821V-U	KD-LX260															X						X																													

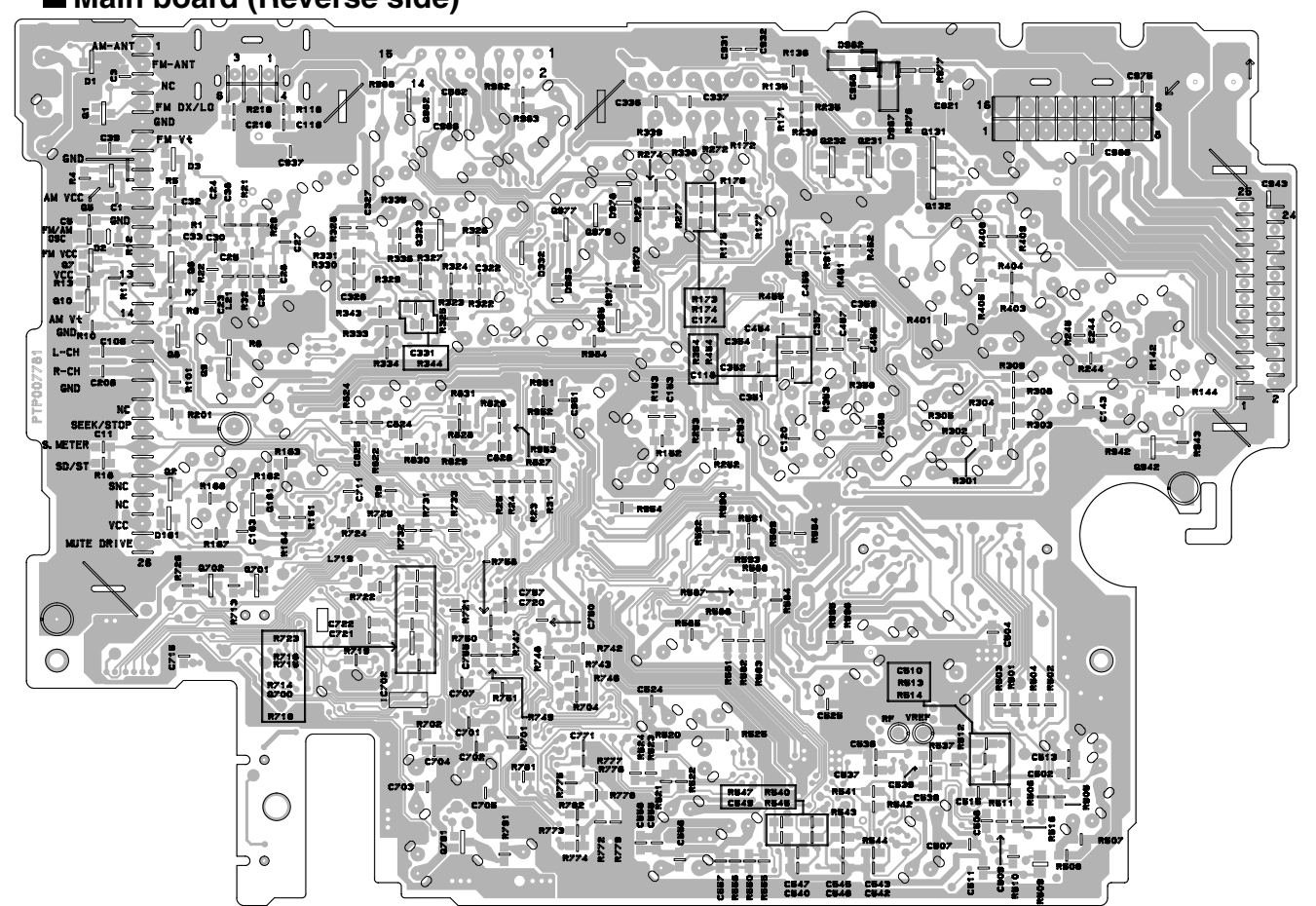


# Printed circuit boards

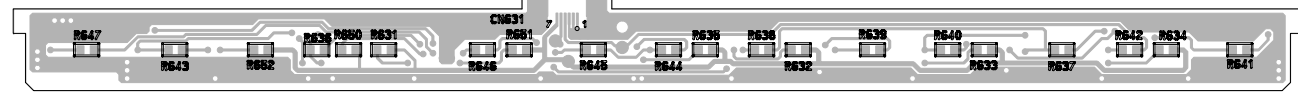
■ Main board (Forward side)



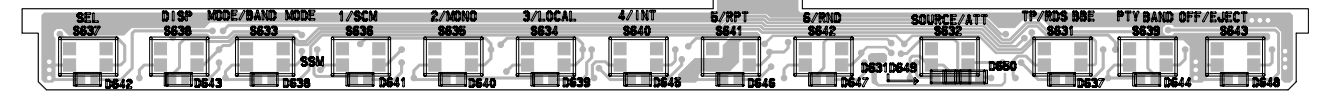
■ Main board (Reverse side)



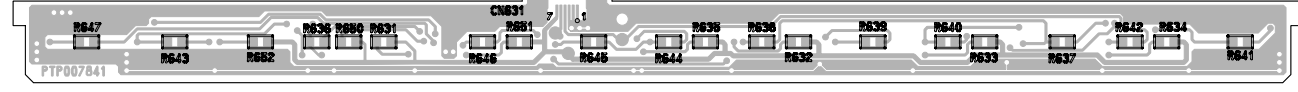
■ KD-LX300 Switch board (Forward side)



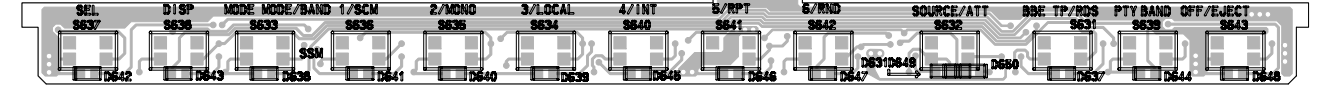
■ KD-LX300 Switch board (Reverse side)



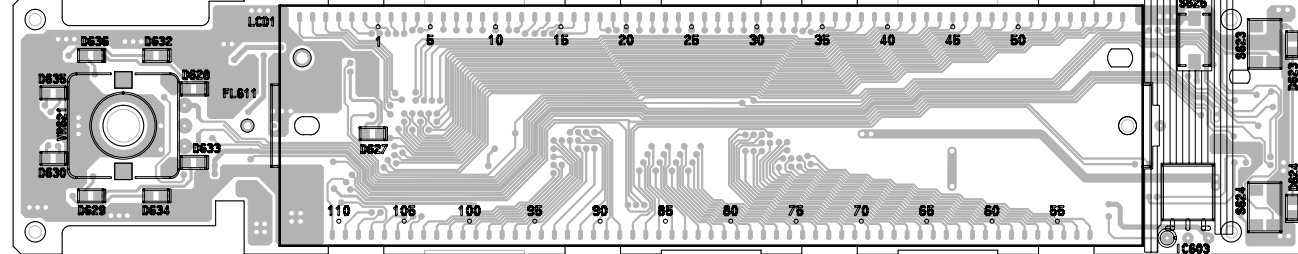
■ KD-LX100 Switch board (Forward side)



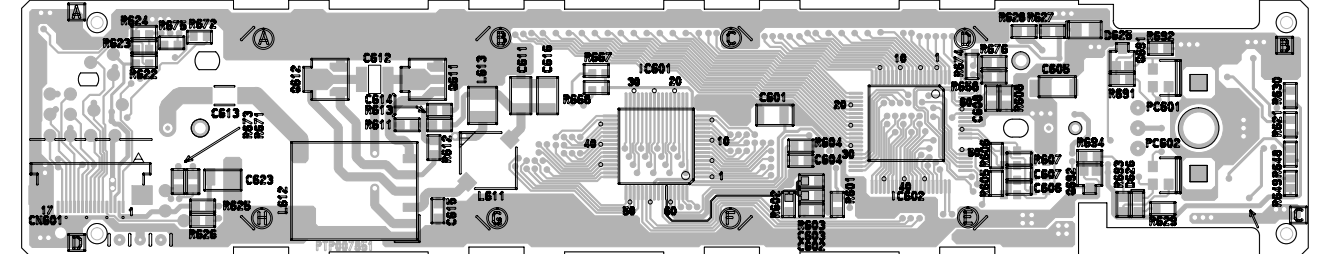
■ KD-LX100 Switch board (Reverse side)



■ KD-LX100 LCD board (Forward side)



■ KD-LX100 LCD board (Reverse side)



5

4

3

2

1

A

B

C

2-4

D

E

F

G

H